

ExamsLabs

ExamsLabs

HOME

ALL VENDORS

GUARANTEE

FAQ

TESTIMONIALS

CART (0)

Pass Your Next Certification Exam Fast!

Everything you need to prepare, learn & pass your certification exam easily.

365 days free updates. First attempt guaranteed success.



Select a vendor...

Select an test...

Your email address

Free Download Demo

Try **Online Engine** before you buy

Online Test Engine: Online Tool, Convenient, easy to study. Instant Online Access. Supports All Web Browsers.

PDF format: Easy to read and print learning materials, our products are available in PDF file format.

Desktop Test Engine: Installable Software Application. Simulates Real Exam Environment. Practice Offline Anytime.

What Client's Say

"I passed today with score 80%. I confirm that it's valid in UK. Focus on "Correct answer" and forget the "Answer X from real test". I had free new questions.



Sebastian
★★★★★

"Questions from this HPE0-S51 dump are 100% valid... not all answers. I passed this exam a few days ago (in France) and got these results.



Wayne
★★★★★

<http://www.examslabs.com/>

Latest Study Materials, Valid Dumps - ExamsLabs

Exam : **300-170**

Title : Implementing Cisco Data Center Virtualization and Automation

Vendor : Cisco

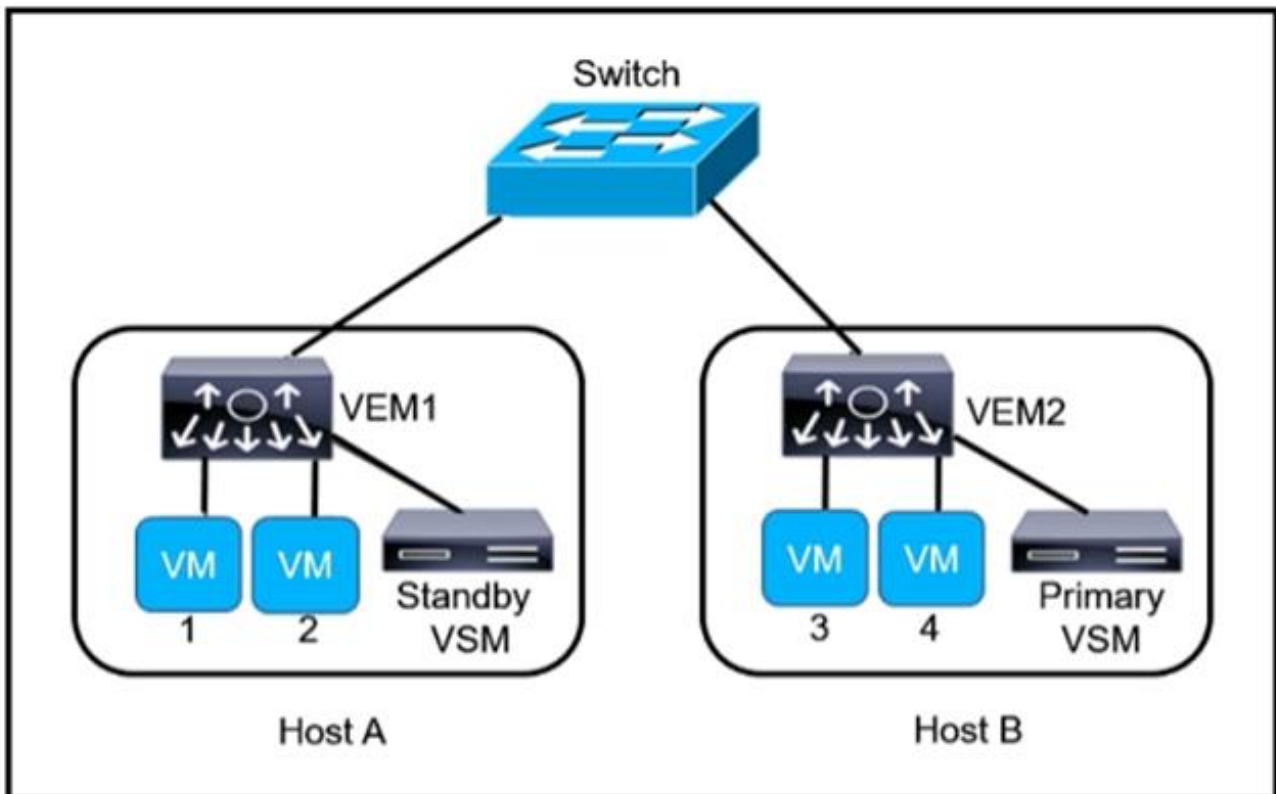
Version : DEMO

NO.1 Which two options are purposes of a device package? (Choose two.)

- A. to provide a Cisco APIC with information about device specifics
- B. to manage a class of service devices
- C. to provide a leaf and spine devices with operating systems and firmware
- D. to render the services required by a graph
- E. to identify a set of network or service functions required by the application

Answer: A,B

NO.2 Refer to the exhibit.



You attempt to configure a local SPAN session on a Cisco Nexus 1000V Series Switch by using the vEthernet interface of VM1 as the source port and the vEthernet port of VM3 as the destination port. Which description of what happens to the SPAN session is true?

- A. It can be successfully only logged to a file on VEM1.
- B. Both VMs must be on same VLAN for this work.
- C. It fails.
- D. It succeeds.

Answer: C

Explanation

https://www.cisco.com/c/en/us/td/docs/switches/datacenter/nexus1000/sw/4_0_4_s_v_1_3/system_management/configuration/guide/n1000v_system/n1000v_system_9span.html#72661

NO.3 Which scripting tool uses event detectors to trigger actions in response to network events?

- A. SDK
- B. Scheduler

C.

D. Ansible

Answer: C

NO.4 A system administrator checks the endpoint database and discovers MAC addresses that belong to inactive local hosts. Which description of the retention of the MAC addresses for the local nodes is true?

A. After 30 minutes of inactivity, the hosts are removed from the local endpoint database of the leaf.

B. The leaf sends three ARP requests to the hosts after an aging period. If the switch receives no response, the hosts are removed from the local endpoint database of the leaf.

C. After five minutes of inactivity, the hosts are removed from the local endpoint database of the leaf.

D. The local database is cleared only when the leaf reboots.

Answer: B

NO.5 You configure a Cisco Nexus device running in ACI mode to use a remote RADIUS server. Which description of this configuration is true?

A. If RADIUS authentication fails, the user is denied access without any additional authentication checks.

B. If the RADIUS server is unreachable, the device falls back to the local authentication automatically.

C. If the RADIUS server is unreachable, users who have been authenticated recently can log in.

D. If RADIUS authentication fails, the device falls back to the local authentication automatically.

Answer: A

NO.6 Which two statements about the configuration synchronization feature on Cisco Nexus switches are true?

(Choose two.)

A. Configuration synchronization uses the Cisco Fabric Services over IP protocol.

B. Configuration synchronization uses the Cisco Fabric Services over IPv6 protocol.

C. Config-sync mode allows you to create a switch profile that can be used to configure a peer switch so that both peers have the same configuration.

D. Configuration synchronization can be used to synchronize all parts of the vPC configuration.

E. FEX interfaces are incompatible with configuration synchronization.

Answer: A,C

NO.7 Which action must you take to implement VXLAN in an environment that runs the Cisco Nexus 1000V Essential edition?

A. Purchase and install a Cisco Nexus 1000V Enterprise edition license.

B. Enable the feature by using the feature segmentation command.

C. Enable the feature by using the feature vxlan-gateway command.

D. Purchase and install a Cisco Nexus 1000V Advanced edition license.

Answer: B

NO.8 Which type of connection is supported by Layer 3 in the Cisco ACI fabric?

- A. iBGP over EIGRP
- B. eBGP over EIGRP
- C. eBGP over OSPF
- D. eBGP over RIP

Answer: C

NO.9 Which Cisco APIC health score will be affected if an EPG does not have a Bridge Domain associated with it?

- A. spine health
- B. tenant health
- C. pod health
- D. leaf health

Answer: B

NO.10 You have a Cisco Nexus 1000V Series Switch. When must you use the system VLAN?

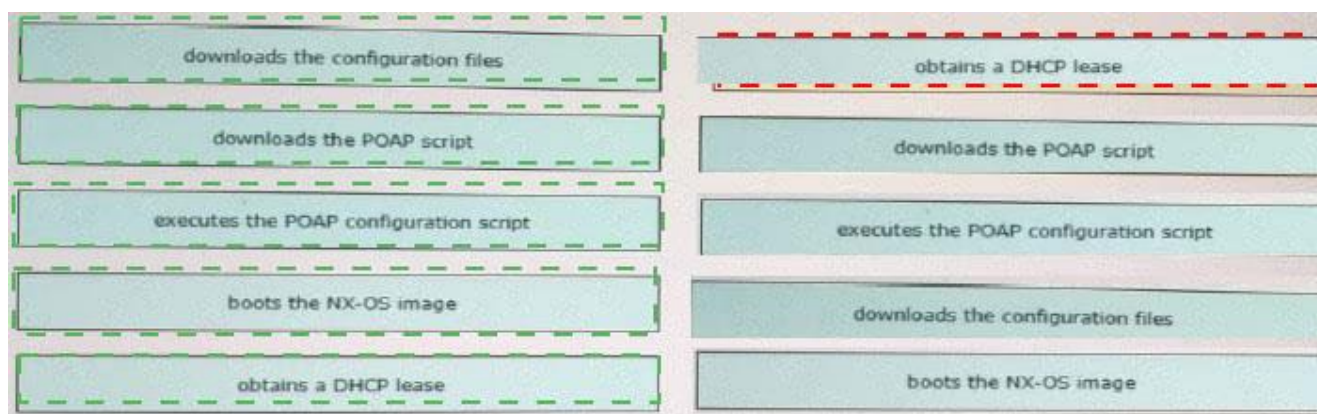
- A. to use VMware vMotion
- B. to perform an ESXi NFS boot
- C. to perform a VM iSCSI boot
- D. to perform an ESXi iSCSI boot

Answer: A

NO.11 Drag and drop the actions that occur during each phase in the POAP process from the left into the correct order on the right.

downloads the configuration files	phase 1
downloads the POAP script	phase 2
executes the POAP configuration script	phase 3
boots the NX-OS image	phase 4
obtains a DHCP lease	phase 5

Answer:



Explanation

Phase 1 obtains a dhcp lease

Phase 2 download the POAP script

Phase 3 executes the POAP configuration script

Phase 4 downloads the configuration files

Phase 5 boots the NX-OS image

NO.12 Why should you configure DHCP relay for Virtual Machine Manager integration?

- A. to provide IP addresses to ESXi hosts
- B. to ensure that virtual hosts have the same address when they are moved by using VMware vMotion
- C. to provide IP addresses to virtual hosts through the VXLAN infrastructure
- D. to create VTEP VMK interfaces on each host for the OpFlex control channel

Answer: A

NO.13 When you perform a task in the Cisco APIC GUI, the GUI creates and sends internal API messages to the operating system to execute the task. Which Cisco ACI tool enables you to view and copy these API messages?

- A. Syslog
- B. SNMP
- C. SPAN
- D. Postman
- E. EPG listener
- F. API Inspector

Answer: F

Explanation

https://www.cisco.com/c/en/us/td/docs/switches/datacenter/aci/apic/sw/1-x/api/rest/b_API_RESTful_API_User_Guide/using_tools_for_api_development_and_testing.html

NO.14 Which option must be created to allow one EPG to communicate with another EPG within same tenant?

- A. a filter
- B. a contract
- C. a subject

D. a taboo

Answer: D

NO.15 You plan to implement virtual switching with service blades in a large environment that will have 12 VSBs.

Which model of the Cisco Nexus Cloud Cisco Service Platform should you use?

A. 1010-X

B. 1010

C. 1110-X

D. 1110-S

Answer: C