

ExamsLabs

ExamsLabs

HOME

ALL VENDORS

GUARANTEE

FAQ

TESTIMONIALS

CART (0)

Pass Your Next Certification Exam Fast!

Everything you need to prepare, learn & pass your certification exam easily.

365 days free updates. First attempt guaranteed success.



Select a vendor...

Select an test...

Your email address

Free Download Demo

Try **Online Engine** before you buy

Online Test Engine: Online Tool, Convenient, easy to study. Instant Online Access. Supports All Web Browsers.

PDF format: Easy to read and print learning materials, our products are available in PDF file format.

Desktop Test Engine: Installable Software Application. Simulates Real Exam Environment. Practice Offline Anytime.

What Client's Say

"I passed today with score 80%. I confirm that it's valid in UK. Focus on "Correct answer" and forget the "Answer X from real test". I had free new questions.



Sebastian
★★★★★

"Questions from this HPE0-S51 dump are 100% valid... not all answers. I passed this exam a few days ago (in France) and got these results.



Wayne
★★★★★

<http://www.examslabs.com/>

Latest Study Materials, Valid Dumps - ExamsLabs

Exam : **070-689**

Title : Upgrading Your Skills to MCSA
Windows 8

Vendor : Microsoft

Version : DEMO

NO.1 You administer Windows 8.1 Enterprise computers in your company network. You provide remote employees with a Windows To Go workspace.

A remote employee informs you that his workspace requires activation.

You need to activate the workspace.

What should you do?

- A. Instruct the employee to run Windows Update from the workspace.
- B. Instruct the employee to connect to the company network from the workspace by using VPN.
- C. Instruct the employee to run the slmgr /upk command from the workspace.
- D. Give the employee a Multiple Activation Key (MAK).

Answer: B

NO.2 A company has client computers that run Windows 8. Finance department employees store files in the C:\Finance directory. File History is on.

A Finance department employee attempts to restore a file to a previous version by using File History. The file is not available to restore.

You need to establish why the file history is not available and ensure that it is available in the future. Which two actions should you perform? (Each correct answer presents part of the solution. Choose two.)

- A. Set the Protection Settings for drive C to On.
- B. Restore the data files from the Previous
- C. Versions tab located in the folder properties.
- D. Review the File History backup log.
- E. Move the file into a library.

Answer: D,E

Explanation:

File History only backs up data in libraries, favorites, desktop, and contacts and must use a non-system drive for backup. Since File History is already on we can assume the drive doesn't need to be changed. So we should review the log and move the file to a library.

Volume shadow copy has been replaced with File History:

[http://msdn.microsoft.com/enus/library/windows/desktop/hh848072\(v=vs.85\)](http://msdn.microsoft.com/enus/library/windows/desktop/hh848072(v=vs.85)).

NO.3 You administer Windows RT tablets in your company network. All users in the company have Microsoft Exchange Server 2010 mailboxes and access them by using Outlook Web Access or Outlook 2010. All tablets are registered on the Microsoft Exchange server as mobile devices.

A user informs you that he has lost his tablet. The user is able to connect to the company network from his home computer.

You need to delete Microsoft Exchange information from the lost tablet.

Which application should you use?

- A. Outlook 2010
- B. Outlook Web Access
- C. Active Directory Users and Computers
- D. Routing and Remote Access Server

Answer: B

NO.4 Your company recently purchased 10 new desktop computers for a remote unconnected location. All of the desktop computers have the same hardware configuration.

You install Windows 8 Pro on a reference computer and install a custom driver to support the video adapter.

You want to create an image of the reference desktop that retains the custom driver in the image.

You need to edit the unattended answer file.

Which setting in the unattended answer file should you edit?

- A. Microsoft-Windows-Shell-Setup | OEMInformation
- B. Microsoft-Windows-PnPSystemprep | PersistAllDeviceInstalls
- C. Microsoft-Windows-PnPSystemprep | DoNotCleanUpNonPresentDevices
- D. Microsoft-Windows-PnpCustomizationNonWinPE | DriverPaths

Answer: B

Explanation:

The Microsoft-Windows-PnpSystemprep component specifies whether all Plug and Play information persists during the generalize pass. Typically, during the generalize pass, all device information is removed from the computer.

If the device information is removed during the generalize pass, the next time the computer runs Plug and Play, the devices will be re-initialized. Typically, the next time the computer boots, the specialize pass runs, and Plug and Play runs. PersistAllDeviceInstalls Specifies whether all Plug and Play information persists during the generalize configuration pass. [http://technet.microsoft.com/en-us/library/cc766005\(v=ws.10\).aspx](http://technet.microsoft.com/en-us/library/cc766005(v=ws.10).aspx)

NO.5 A company has Windows 8.1 client computers. Users store data files in their user profile libraries.

You need to ensure that you can restore data files to any date while minimizing system overhead.

Which two actions should you perform? (Each answer presents part of the solution. Choose two.)

- A. Enable Storage Spaces.
- B. Configure settings to save copies of files daily.
- C. Turn on File History.
- D. Configure Windows 7 File Recovery.

Answer: B,C

NO.6 You have a Windows 8.1 Pro desktop computer and a Windows RT 8.1 mobile device.

You sign in to the computer and the device by using the same Microsoft account.

You discover that the settings are not being synchronized between the Windows 8.1 computer and the Windows RT 8.1 device.

You need to ensure that the settings are synchronized.

What should you do first?

- A. From the PC settings page, modify the Privacy settings.
- B. Enable the Configure Default consent Group Policy setting.
- C. Enable the Trusted Hosts Group Policy setting.

D. From the PC settings page, click Trust this PC.

Answer: D

NO.7 A company has client computers that run Windows 8. The company uses Windows BitLocker Drive Encryption with the data-only option on all client computers.

You delete a file containing highly confidential information from your computer.

You need to clear the free space on the hard drive to minimize the chance of the confidential information being recovered.

Which command should you run on the client computer?

A. manage-bde -w

B. diskpart clean

C. BdeHdCfg -target c: shrink

D. chkdsk /spotfix

Answer: A

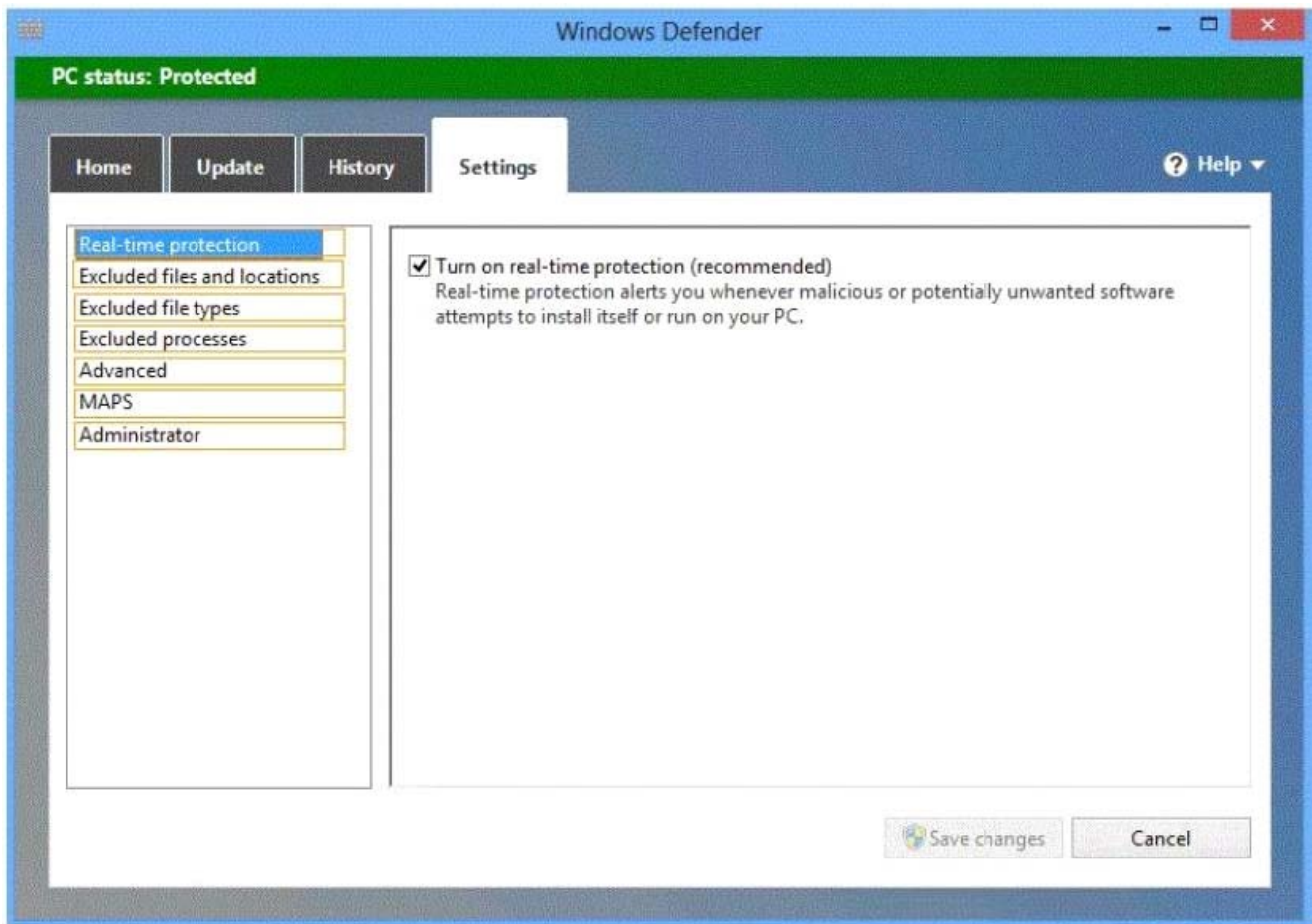
NO.8 HOTSPOT

You have computers that run Windows 8 Pro and are configured as a workgroup. Each computer is scheduled to run a Windows Defender full scan every morning at 07:00.

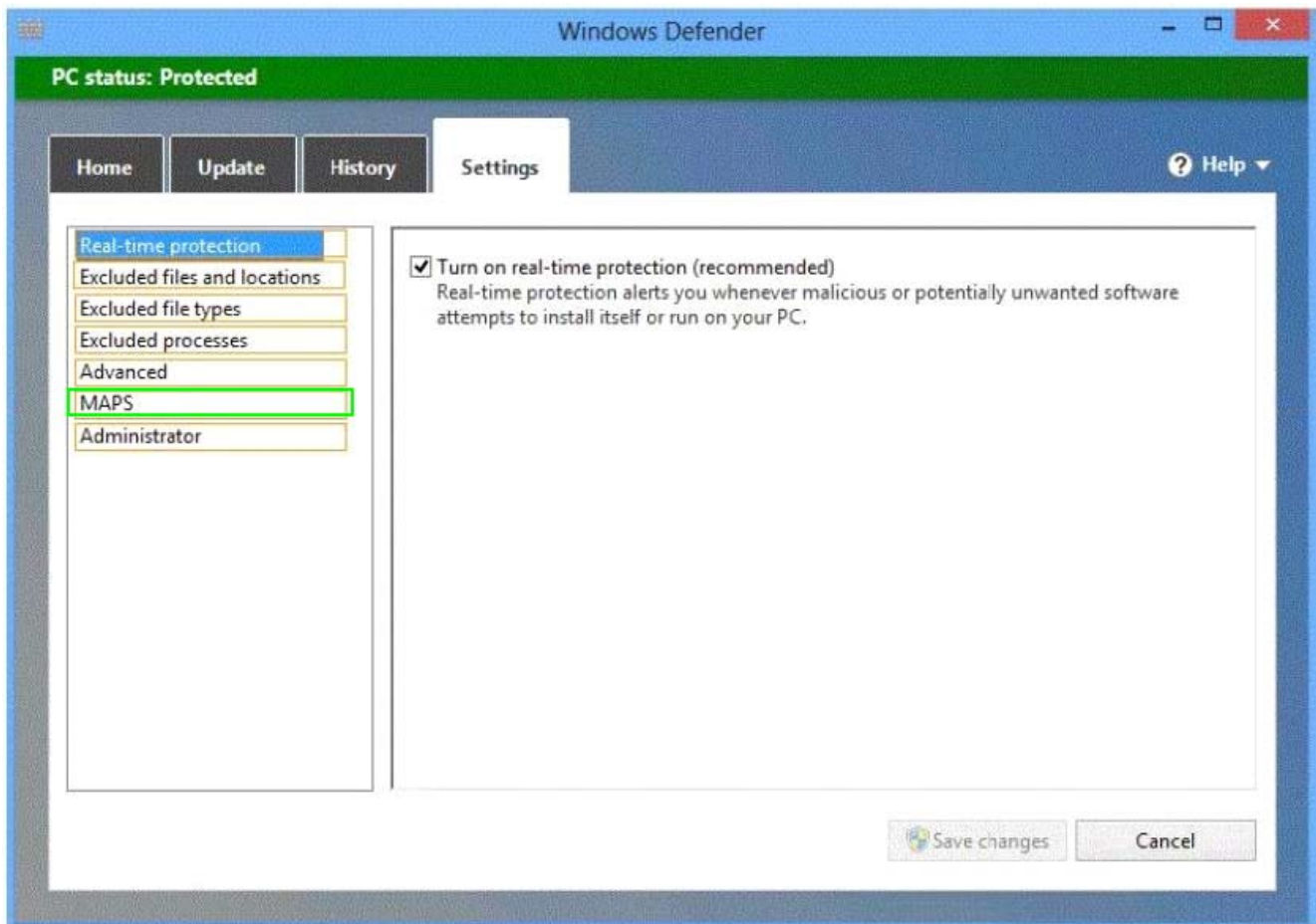
Users report that they are unable to view previous instances of detected malware when they arrive to work.

You need to ensure that all users can see previous instances of detected malware in Windows Defender.

Which option on the Settings tab should you select? (To answer, select the appropriate option in the answer area.)



Answer:



NO.9 DRAG DROP

Your computer runs Windows 8.

The drive on which your File History is stored is almost full.

You need to move the File History storage location to another drive.

Which three actions should you perform in sequence? (To answer, move the appropriate actions from the list of actions to the answer area and arrange them in the correct order.)

Actions	Answer Area
Move the stored file history from the old location to the new location.	
Open File History from Windows Explorer.	
In the File History window, choose the option to change the File History folder.	
In the File History window, choose the option to change the File History drive.	
Browse to the new storage location.	
Open File History from Control Panel.	

Answer:

Actions	Answer Area
Move the stored file history from the old location to the new location.	Move the stored file history from the old location to the new location.
Open File History from Windows Explorer.	
In the File History window, choose the option to change the File History folder.	In the File History window, choose the option to change the File History drive.
In the File History window, choose the option to change the File History drive.	
Browse to the new storage location.	Browse to the new storage location.
Open File History from Control Panel.	

NO.10 You support computers that run Windows 8 Pro and are members of an Active Directory domain. Several desktop computers are located in a subnet that is protected by a firewall. The firewall allows incoming TCP connections only to ports 80 and 443.

You want to manage disk volumes on the desktop computers from your computer, which is located outside the protected subnet.

You need to configure the network to support the required remote administration access.

What should you do?

- A. Run the winrm quickconfig command on the desktop computers.
- B. Run the winrm quickconfig command on your computer.
- C. Enable Remote Desktop on the desktop computers.
- D. Install Remote Server Administration Tools (RSAT) on your computer.

Answer: A

NO.11 An organization has client computers that run Windows 7. You upgrade the client computers to Windows 8 without migrating the local user profiles.

You install the Windows Assessment and Deployment Kit (ADK) in the environment.

You need to migrate the user profiles from the Windows 7 installation to the Windows 8 installation.

What should you do first on each client computer?

- A. Copy the Default Profile to a folder on drive C.
- B. Run Windows Easy Transfer and select the user profile to migrate.
- C. Run the scanstate command.
- D. Run the loadstate command.
- E. Run the ImageX command.

Answer: C

NO.12 At home, you use a desktop computer that runs Windows 8. At work, you use a laptop that runs Windows 8 and is connected to a corporate network. You use the same Microsoft account to log

on to both computers.

You have a folder with some personal documents on your desktop computer. The folder must be available and synced between both computers.

You need to ensure that the latest version of these files is available.

What should you do?

A. Move the folder to the Documents folder.

Go to PC Settings. Under Homegroup, select Documents to be Shared.

B. Move the folder to the Documents folder.

Go to PC Settings. Under Sync your settings, enable Other windows settings.

C. Create a folder by using SkyDrive for Windows. Move all of the personal documents to the new folder.

D. Right-click the folder and select Share With, and then select Homegroup (view and edit).

Answer: D